

ZOE FAIRISLE HEADBAND



Double Knit

Knitting Needs

Black Hills Corinui DK weight dye free natural coloured 100% wool

Main Colour (MC) 20g : Contrast (C) 20g

(Yarn amounts given are approximate and are based on average requirements.)

1 Pair 3.75mm needles : Wool needle for sewing in ends

Tension

Not important

Experience Level



= experienced knitter – beginner fairisle

INSTRUCTIONS

Using MC and 3.75mm needles, cast on 15sts

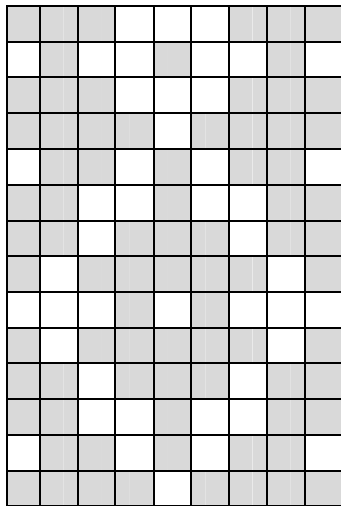
Next row: With MC, K1, P1, K1, and then join in C and follow the fairisle grid starting at Row 1 to last 3 sts, K1, P1, K1 in MC

Keeping the K1, P1, K1 in MC at each end of the rows, continue to follow the grid to the required length. Cast off

MAKE UP

It is suggested that you handwash and then block the headband before sewing up with an overstitch. Sew in ends.

FAIRISLE GRID



Row 1

BH/405

Enquiries - please contact BlackHills (NZUK) Ltd

701 Karaka Road, Hurunui (State H/W 7) RD, Hawarden, North Canterbury 7385, New Zealand.

Phone: 00 64 3 314 4195. Fax: 00 64 3 314 4196. Email: info@blackhills.co.nz. Website: www.blackhills.co.nz

WARNING: Reproduction of this publication is protected by copyright. It is sold on the condition that it is only used for non-commercial purposes. All other rights reserved by BlackHills (NZUK) Ltd.